

OFFER





LIST OF CONTENTS



MODERN HOUSE	3-10
MATERIAL OF THE FUTURE	11-14
SAFETY	15-18
SOLUTIONS FOR HOUSES	19-34
ROLLER BLINDS, SHUTTERS, MOSQUITO NETS	35-42
ENCLOSURES OF TERRACES	43-44
FRONT PANEL DOORS	45-46

● IMPOSSIBLY MODERN... THIS IS HOW ONE LIVES NOW

“Life is about being a little bit impossible” encouraged Oscar Wilde. Contemporary houses prove that the writer convinced architects, as Polish landscapes are increasingly intriguing with buildings which only a decade ago seemed... impossible.

The forms, eclecticism of materials, types of finishing are becoming bolder and more visionary. Materials, textures, colours merge and intermingle, creating works of applied art in which... you can live in. Although secure and firmly seated, visually they seem to be a dispute with gravity or a challenge to the laws of physics.

The aluminium joinery has become an inspiration and boost for the development of architectural ideas worldwide, setting new trends, e.g. in single-family housing.

A modern house is heavily glazed, spacious, combining deliberate roughness with masterful elements. It is also a house that is

fully open - to light, to nature and to the lifestyle of its residents. Large open spaces often combine several functionalities, e.g. the entire living area is combined with a living room, kitchen, dining room, communication and entrance area. The whole space is further enhanced by glass door leading to a roofed terrace or a mezzanine, which in turn opens up the interiors to the height of two floors.

A modern house has minimalistic decorations in favour of high-quality materials and their innovative use, e.g. concrete ceilings, resin floors or metal structures. In such a house, contrasts are welcome - e.g. minimalism with décor, smooth surfaces with porous ones - and also a glass façade is not unusual. Window and door frames are designed individually - matching the size, shape and colour to the individual character of each room.

“

A modern house is heavily glazed, spacious, combining deliberate roughness with masterful elements. It is also a house that is fully open - to light, to nature and to the lifestyle of its residents.

“





● BEAUTY LIES ... INSIDE

A modern house means a modern interior. Different tastes, different needs, different styles - and therefore different ALU joinery solutions. The aluminium joinery inseparably supports the design process, giving interior designers tremendous space for creativity. Each decade or even a year that passes brings innovations and a fresh look at the living space.

For example: the loft trend, which has been popular for some time now, combines industrial elements with design, but recently an additional “must have” has been cosiness and functionality. There’s a move away from cold, anonymous, overly minimalist interiors that don’t really have a character of their own and don’t really encourage people to make themselves at home,

At Budmar, we are enthusiasts of both individual style and functionality, hence our offer includes many products that allow you to furnish your house with visually attractive, safe and durable joinery solutions.

“

Different tastes,
different needs,
different styles - and
therefore different
ALU joinery solutions.

“

● WARMTH IS INSIDE

Windows and doors in aluminium frames are the visual design, which make you feel... warm. And not only in your heart. Aluminium structures are widely used in residential construction and are popular with private customers throughout Europe. Aluminium is “house friendly” and has a huge thermal potential - for several years, it has been recognised by architects as a “thermally friendly” material for windows and doors (with the application of appropriate solutions in the construction of profiles). Windows and doors made of aluminium add extra character to a building - e.g. they perfectly balance the plain shape and are a decorative element.

● ENERGY-SAVING ALUMINIUM

Aluminium joinery guarantees comfort, convenience and lower energy consumption. High thermal insulating properties of profiles result in savings on heating and cooling. The purchase of aluminium joinery is an investment which will surely prove its worth. ALU-solutions are durable, resistant to weather conditions and easy to maintain (they do not require maintenance using special agents).







● SEE THE BENEFITS, HEAR THE SILENCE, FEEL THE CALM

Aluminium windows or doors are stable and easy to use, and thanks to the large size of the glazing they “allow” more daylight inside. They also provide excellent sound insulation and, thanks to appropriate systems, provide additional anti-burglary protection.

● VISUALLY AND ENVIRONMENTALLY FRIENDLY

Aluminium joinery elements are available in a wide selection of colours, which makes it possible to match them to any façade design.

In the single-family construction industry, in both developer and individually built houses, large-sized glazing projects are becoming more and more frequent. If the building is to contain more than 30 square metres of glazing, aluminium systems are absolutely essential. Architecturally advanced combinations of fixed elements and sliding (or tilt) structures are built on the basis of metal profiles. ALU-profiles are characterised by high ductility and strength (they resist deformations and withstand heavy loads). They have caused that the landscape of single-family architecture has been enriched with glass panes, covering the majority or even the entire wall of the building.

Thanks to aluminium, not only glass but also nature preservation is of XXL size. ALU-material is highly environmentally friendly and completely recyclable.



SINGLE-FAMILY HOUSE

Lubawa



Using the systems to design modern curtain walls allows for the construction of walls of various degrees of complexity. The wide range of design possibilities with the systems used made it possible to implement the architect's concept, which is based on overlaying several relatively simple solids. We have a pitched roof in one part and a completely flat roof in another part. Adding functional glazing, wooden colour elevation with contrasting off-white and casing in the colour of windows and doors gives the house a contemporary look, which was desired by the investors.

Large terrace door is an excellent way to bring light into the interiors and the additional opportunities of their arrangement. Sliding function - ultra-convenient solution while maintaining stability and lightness of the structure. Also, we do not forget about solar protection, so that the interior of the building heats up only at the request of the residents.



● FACTS ON THE “MATERIAL OF THE FUTURE” (AS THIS IS WHAT ALUMINIUM IS OFTEN CALLED)

Alu for the brave only? At Budmar we say: alu for creative ones

Formerly, aluminium windows were regarded as a cutting-edge idea or even a fanciness. Today they are treated as a conscious choice, opening up a range of creative options.

Architects (and residents themselves) are increasingly appreciating the role of natural light brought into the interior. Thin, metal window profiles are encouraging sunlight to come inside. Aluminium windows have another advantage - they can be almost invisible, allowing the boundaries between the interior of the house and its surroundings to be blurred. Thanks to profiles made of the “material of the future”, it is possible to obtain the effect of blending the garden greenery with

the space of the living room. At Budmar we say: “thanks to ALU-profiles, nature will move in with you and become another householder”.

The advantages of aluminium windows are related to their resistance to scratches and weather conditions. What is important, metal profiles may be anodised or powder coated, which fully protects them against corrosion. They are not subject to corrosion and do not require special maintenance.

Thanks to their high visual attractiveness and functionality, aluminium joinery does not follow design trends. It co-creates them.

● AT BUDMAR, WE THINK WARMLY OF ALUMINIUM

Only a dozen or so years ago, there was a common belief that window joinery made of aluminium could not cope with the temperatures specific to our longitude and latitude, that it would contribute to deterioration of the thermal balance of a residential building. Until recently, aluminium joinery was associated either with very high costs or lower ther-

mal insulation parameters than PVC. Today enthusiasts of large glazing have nothing to fear. The technology development enabled large-format glazing to meet the strictest construction requirements. What is important, they have become cost-effective - both in terms of the thermal balance and the prices of aluminium profiles.



● WE HAVE CALCULATED IT CAREFULLY - ALUMINIUM REALLY PAYS OFF

Budmar's financial simulations show that even with relatively small sliding door size, the price of aluminium joinery is comparable to that of PVC. The larger the size, the more favourably the price of aluminium is. Investment in aluminium frames pays off due to their high quality and exceptional durability. ALU joinery will last for many years.

“

ALU joinery will last
for many years.

“



● ALUMINIUM JOINERY IS A SYNONYM OF:

01. lightness, ductility and aesthetics,
02. low weight, which allows for free shaping of the structure,
03. high strength and durability,
04. appropriate rigidity of the sections,
05. resistance to crumpling, mechanical damage and deformation (it can remain intact for many years),
06. resistance to changing weather conditions and corrosion (which is possible due to the use of special profile reinforcements with magnesium- or silicon-enriched components),
07. non-flammability (it does not contribute to a potential fire),
08. simple maintenance and cleaning (it does not generate static electricity and
09. does not catch dust),
10. a wide range of applications (in terms of both the type of building and the type and shape of the windows),
11. possibility of using various colours and protective and decorative coatings,
12. measurable energy efficiency,
13. high environmental compatibility (recoverability and recyclability).



SECURITY



Smart solutions for front doors

In addition to their decorative function, a perfect front door dampens noise, prevents heat loss and constitutes a barrier to uninvited guests. They provide comfort and improve security, and recently also guarantee smart interaction with residents.

It is definitely worth entering a SMART everyday life... through a SMART door. The technological innovations used in Budmar doors help with everyday challenges and solve problems such as forgotten keys or locked at home, unlocked doors or mobility impairment.

1. Secury Automatic lock with a motor
2. Secure Connect sC200 / sC50
3. Fingerprint reader
4. Bluetooth / code keyboard
5. Code keyboard
6. RIFD reader



SMART SOLUTIONS FOR FRONT DOORS

Smart control



Budmar is a producer of high-quality aluminium structures. We specialise in manufacturing doors, windows, facades and fire joinery. We are experienced and professional, but also constantly eager to develop and expand our range of services. Therefore, we would like to present innovative solutions applied in front doors.



FINGERPRINT READER

- 150 programmable user fingers,
- three installation options (leaf, frame, wall),
- compatible with all electromechanical locks and GU electric door strikes,
- data transmission in RS-485 standard - no possibility of unauthorised use.



BLUETOOTH & CODE KEYBOARD

- glass designer enclosure,
- 18 programmable codes and pairing of 6 phones,
- one installation option - leaf,
- data transmission in RS-485 standard - no possibility of unauthorised use.
- compatible with all electromechanical locks and GU electric door strikes.



CODE KEYBOARD

- three installation options (leaf, frame, wall),
- 20 programmable codes,
- compatible with all electromechanical locks and GU electric door strikes,
- data transmission in RS-485 standard - no possibility of unauthorised use.



RFID READER

- any number of programmable cards and keyfobs,
- one installation option - leaf,
- data transmission in RS-485 standard - no possibility of unauthorised use.
- compatible with all electromechanical locks and GU electric door strikes.

Smart solutions for front doors

Have you ever locked your keys at home or forgotten to take them with you when leaving for work? Are you constantly worrying if you locked the door? **If you are experiencing these problems, we have a solution for you!**

Did the keys get slammed in the house?



FINGERPRINT
READER



CODE
KEYBOARD



BLUETOOTH & CODE
KEYBOARD



RFID
READER

Are you overcoming barriers?

Did you forget to lock the door?



DOORS AND WINDOWS
OPENED WITH AN
APPLICATION ON YOUR
PHONE



DOOR OPENING USING A
REMOTE CONTROL

Do you constantly forget your keys?



FINGERPRINT
READER



CODE
KEYBOARD



BLUETOOTH & CODE
KEYBOARD



RFID
READER

● HOUSE. WE DO NOT CONFINE OUR IMAGINATION INSIDE FOUR WALLS

The dynamic development of the construction industry, technology development striving to improve the properties of aluminium and creating innovative solutions using this metal have made aluminium windows and doors an integral part of modern single-family housing - e.g. in barn style or with a glazed façade.

The perfect house - fully customised and taken out of the box - is no longer a dream. It has become a goal.

The imagination, courage, and no restraints of the authors of the idea are often a challenge for the contractor. At Budmar we willingly face them. We believe that cooperation with construction enthusiasts and exploring completely new areas of architecture is a unique opportunity for development. Many years of experience, engineering knowledge of our employees and modern aluminium joinery production solutions are our advantage.

● IN HARMONY WITH NATURE

Large window systems do not only bring more light in but it is also a larger surface exposed to weather and mechanical factors. Nature has its own laws, weather can surprise you and climate is subject to dynamic changes. Significant temperature fluctuations, sudden rainfall or snowfall accompanied by strong wind may adversely affect window systems.

Products made of aluminium, offered by Budmar, ensure high resistance to adverse weather conditions without the need of frequent maintenance. ALU-structures are also comfortable to operate, and their energy-saving parameters remain at the same (high) level for many years.

“

The perfect house - fully customised and taken out of the box - is no longer a dream. It has become a goal.

“

● WELCOME TO A GLASS HOUSE

Light is a magical phenomenon. It highlights details, brings energy and creates atmosphere. Architects and householders especially appreciate large size glazed surfaces, which visually enlarge the interior and allow much sunlight inside. Innovative aluminium systems make it possible to design dream glass houses. Stable and safe, yet intriguing in form - e.g. maintained in the “barn” style. Large-sized glazing looking out on the garden side provide beautiful views while working at home. They allow you to contemplate the beauty of nature and watch children playing outside without having to go out onto the terrace.

Aluminium is the most durable material in window joinery - it is not possible to build such large-sized structures and carry such heavy loads in PVC or wood.

Aluminium harmonises well with glass surfaces. The less visible the connection between the glass panes and the structure, the better. The use of a low-profile sill flush with the floor in lift-and-slide door allows for complete integration of the house interior with the terrace or balcony.

The visual aspects of ALU-structures are followed by their cost-effectiveness. The use of window and door system profiles to build large glazing in houses translates into lower construction costs. Below you will find an overview of the use of such systems combined with a sliding door system.





● SOLUTIONS FOR HOUSES

Window and door systems - newcomers on the market.

Genesis from Aliplast is a popular system offering various options. This three-chamber system, designed for constructing windows with increased thermal insulation, has thermal parameters meeting the requirements of U_w starting from 0.90. Genesis 75 is based on 75 mm deep frame sections.

It is a system dedicated to window structures, both in public buildings and in single or multi-family housing. The wide range of sections/profiles allows designing modern windows, doors and shop windows featuring high functionality.



GENESIS / ALIPLAST



Single-family house, Lubawa. 2021

Single-family house, Lubawa. 2021





● FAÇADES IN HOUSES



MC WALL / ALIPLAST

Façade systems are an important part of modern construction industry.

MC Wall Aliplast is designed for the design of modern curtain walls in simple and complex shapes, providing a wide choice of design options. This system enables designing of structures to be opened within the façade: parallel spaced windows and roof windows.

The MC Wall curtain wall consists of vertical mullions and horizontal transoms, connected with one another with stainless steel pins; 2 stainless steel pins per node ensure very high load-bearing capacity of the mullion-transom joint, both in terms of wind pressure and the load of the panes. This does not interfere with the possibility of using conventional transom brackets or fixing them only with screws from the front.

Additional features and advantages of the MC Wall system:

- wide range of mullions and transoms adapted to static requirements,
- possibility of inserting insulators depending on the thickness of the panes,
- easy application of vapour-tight and vapour-permeable aprons along the façade perimeter, in accordance with the new guidelines for the assembly of aluminium structures,
- wide range of masking strips allowing for varied visual effects for the curtain walls,
- possibility of bending profiles in both planes,
- painting according to RAL palette, in wood structure, anodized finish, bi-colour,
- visual width of mullion-to-transom: 55 mm.

SOLUTIONS FOR HOUSES



Terrace door - exit to the terrace.

For many people, a house with a terrace and garden is a dream of a comfortable living space come true. The outdoor chill-out zone is often arranged in full harmony with the interior. In order for it to fulfil not only visual, but also functional purposes, it should be well communicated with the interior of the house. The solution comes in the form of terrace systems, seamlessly connecting the house with the garden. Sliding, lift-and-slide and folding solutions are available. Depending on the type of the system and the investor's needs, they can be filled with single, double or three-chamber panes; sound-proof or anti-burglary.

“

For many people, a house with a terrace and garden is a dream of a comfortable living space come true.

“





● SLIDING SYSTEMS

● Ultraglide Aliplast

It is an innovative system with increased thermal insulation, dedicated for designing sliding or lift-and-slide structures. UG sliding structures are intended for use in residential buildings, mainly residential and public buildings. Ultraglide meets the latest standards in thermal insulation, aesthetics and safety.

Thanks to its unique parameters Ultraglide allows for designing structures with very large dimensions of a sliding sash - maximum height: Hs=3300 mm, maximum width: Bs=3500. The maximum sash weight is: 250 kg for the sliding option and 400 kg for the lift-and-slide option. The system enables the use of large glazed surfaces to allow more light inside and facilitates their arrangement, while maintaining stability, functionality and lightness of the structure.

- possibility of using different types of filling (single or double-chamber pane),
- system adapted to the latest thermal insulation requirements thanks to a thermal separator available in the widths of 22 mm and 28 mm, with glass fibre added, as well as thermal inserts and under-glazing inserts, improving the thermal insulation of the cross-section,
- available options: UG version (with low profile sill, 90° angle solution), UGi, UG it
- wide selection of colours - RAL palette, structural colours, wood imitation colours, anode, bi-colour.

● Additional features and advantages of the Ultraglide system:

- construction: frame: 3, 5 and 7-chamber system,
- possible combinations of two, three and four elements on the basis of the two-track system,
- profiles adapted for installation (manually or automatically) of many fittings available on the market,



ULTRAGLIDE / ALIPLAST

Ultraglide / Aliplast system



Ultraglide / Aliplast system

SOLUTIONS FOR HOUSES



Fusion of aesthetics with ergonomics

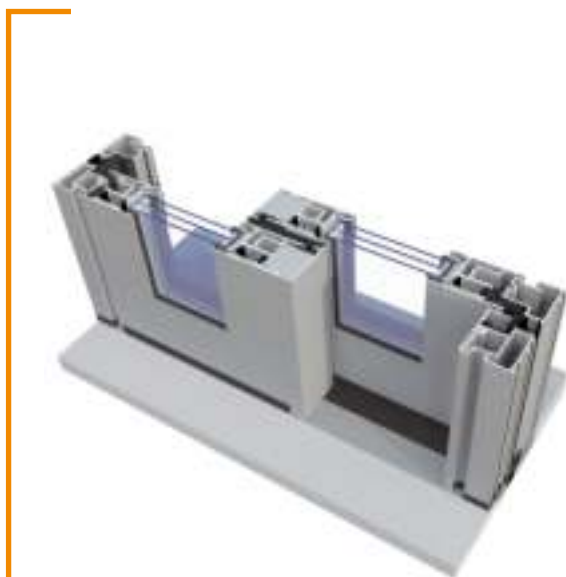
Sliding systems, known as “moving walls”, allow you to better manage your space, opening it up to the whole house. The use of sliding or lift-and-slide systems is a very functional and elegant alternative to swinging doors. In the case of large-sized structures, it is possible to match suitable drive to facilitate opening.

Sliding systems allow the design of structures with very large mobile sashes, of height and width significantly exceeding 3 metres. Their maximum weight is even 250 kg in the sliding version and 400 kg in the lift-and-slide version. Advanced aluminium joinery technology ensures that large-sized glazing remains stable, safe and easy to operate.

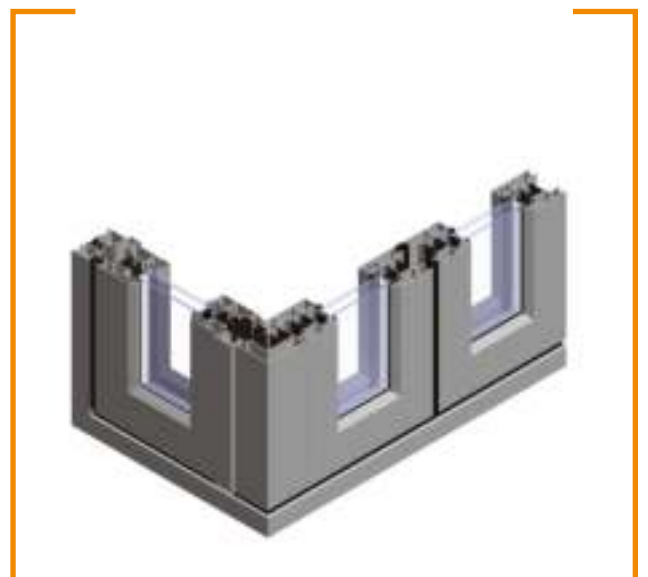


Ultraglidle low profile sill, high comfort of use

At Budmar, building without barriers is our priority. The Ultraglidle low-profile sill system features very high functionality and aesthetics. It prevents bumps at the door-floor junction and enables flushing the sill with the floor. Modern design and the use of lift-and-slide fittings in the low-profile sill system ensures comfortable use combined with elegant design. Low profile sill means no additional obstacles for people with impaired mobility, effortless exit to the outside and to the terrace. The low-profile sill option is also very much appreciated by parents, as it supports safe movement of children. The maximum sash weight in the system is 400 kg and the possible combinations of structures are 2 and 4 elements, based on a double-track frame.



ULTRAGLIDLE LOW PROFILE SILL
/ ALIPLAST



PANORAMA / ALIPLAST

● FOLDING SYSTEMS

● Panorama

In harmony with design. Wide passages, lightness of space arrangement, elegant minimalism... These are just some of the benefits of the Panorama system. Depending on the requirements and application, Panorama offers inward or outward opening structures in a wide range of sash configurations (2+1, 3+2, 3+3). The minimised vi-

sual width of the profile used in this system gives the folding door structure an impression of lightness. New integrated fittings: hinge with bottom guide, hinge with a grip and low handles improve the functionality while reducing the overall size of the folding door structure.

● Additional features and advantages of the Panorama system:

- thermally insulated, three-chamber door system intended for the construction of folding doors, making it possible to arrange wide-open passages,
- possibility of using two types of sill system: a system with a flat sill with a brushed seal and a tight sill, manufactured on the basis of the entire frame along the perimeter of the terrace window,
- available in a version with increased thermal insulation - due to the use of additional thermal inserts around the perimeter and between the spacers of the door sash and frames,
- available options include Panorama and Panorama i+,
- significantly supports the visually appealing and functional installation, providing for a very efficient use of space in the building,
- wide range of solutions and potential applications allows you to design structures of different types: from the enclosures of balconies, terraces or winter gardens - to structures suitable for public buildings and commercial facilities,
- possibility of painting according to RAL palette, in Aliplast Wood Colour Effect wood structure, anodized finish, and bi-colour.

SOLUTIONS FOR HOUSES



Galandage Aluprof

Discreet, spacious, functional... The MB-59 SLIDE Galandage system is based on solutions of the MB-59 Slide system and is intended for installing sliding doors with thermal insulation, hidden in brick walls. The advantage of this system is that the open sash is completely hidden in the wall. The door installed this way eliminates the division between the living area of the house and the outside terrace or garden.

Safe and quiet...

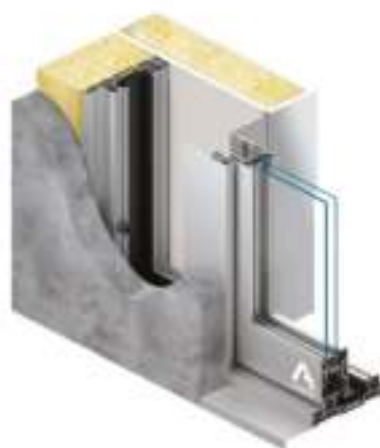
The range of available profiles includes two- and three-rail frames. A wide range of glazing allows for installation of single or double chamber sets, including soundproof and anti-burglary sets.

Additional features and advantages of the Galandage system:

- large acceptable dimensions of door sashes: height up to 2.6 m, width up to 1.8 m; maximum weight of sash up to 160 kg,
- slender and resistant sections with three-chamber structure, where the central part is the insulation chamber with wide thermal separators,
- 2- or 3-rail frames allowing for installation of doors with a wide passage clearance,
- wide range of glass thicknesses available for door sashes (up to 42 mm), which gives you the freedom to choose glass with suitable parameters,
- possibility of installing most sliding fittings available on the market.

Unobstructed view and space...

The use of Galandage in the case of terrace or balcony doors (single or double sash), gives unrestricted access to the outside zone, blurring any boundaries and increasing the comfort of use.



GALANDAGE / ALUPROF

● SMART G-U SOLUTIONS FOR TERRACE DOORS

We are opening to nature

At Budmar we understand the need for close contact with nature and natural light. Openness to nature, the desire to “invite” it inside are increasingly used in architectural designs, through among other, large-sized glazing. In some newly built houses terrace doors take up more space than the walls. This approach changes the perspective of thinking about the arrangement of home space, blurring the boundary between the interior and exterior of the house.

Smart solutions, often unnoticed in everyday use, make life easier even if terrace door is very large. It is innovative technologies which make it highly comfortable to use. Discreet comfort is becoming the standard expectation for solutions for modern homes.

Remote control of door and window closing status

The sense of security is priceless. Thanks to remote monitoring of the closing status of doors and windows, you can check at any time whether they are close or even look inside the house.

Open and close patio door with your phone - walk the dog remotely

How to be in two places at the same time? Innovative technology can help you with this challenge! Remote control of patio door is convenient for all household members, even the four-

legged ones. It significantly facilitates everyday functioning, e.g. walking the dog or avoiding flooding of the interior in case of a sudden storm. The simplicity of the terrace door form is combined with advanced technology and SMART solutions.

Smart obstacle detection in terrace door

A happy home is a place where people - especially the smallest ones - feel comfortable and safe. Using a drive with smart obstacle detection helps to protect children from unfortunate accidents.

Barrier-free home - automatic terrace door with a low-profile sill

Innovative technology supports creating barrier-free space and eliminating unnecessary obstacles. Modern solutions allow, among others, unrestricted access to the terrace (thanks to a low-profile sill) and the possibility to control the door with a remote control.

Push&Go

Just give it a gentle push! Push&Go function considerably facilitates the use of large glazed door. Push&Go gives the solid construction maximum ease of use - a gentle push on the sash/handle will automatically close and open the door.



opening to nature

remote control of door
and window closing status

opening and closing patio
door with your phone

smart obstacle
detection in door

automatic terrace door
without barriers

push&go



● ROLLER BLINDS, SHUTTERS, MOSQUITO NETS

Large, glazed windows require appropriate protection against the sunlight (excessive lighting and heating of the interior), street noise or curious glances of pedestrians. An interesting form of the building and visually appealing façade are obligatory - the choice of such protection cannot be accidental... both visually and technically.

The most popular solution is a roller blind or shutters. Both control the light penetration, but each of them has unique features. It is advisable for residents to define their priorities - e.g. darker, but with less heat loss; no joints between the covers - but with less thermal insulation...

In terms of construction, in a roller shutter the curtain is drawn up and wound around a winding tube. The curtain of a shutter, consisting of profiled slats, does not need to have side guides - their function is taken over by stainless steel cords.

When fully lowered, the roller blind cuts off the sunlight and completely covers the view, whereas the shutter - thanks to the slats which can be turned - makes it possible to control the level of light in the room (it is diffused light) and to partially admire the view outside the window. An additional advantage of shutters is that they ensure air circulation in the interior and reflect

light by aluminium slats. In a nutshell, we can assume that a roller blind is a more “radical” solution and a shutter a more liberal one. Also, when it comes to thermal insulation. This aspect gives additional scores to the roller blind. Tests show that an aluminium roller blind improves the thermal gain of a window by 20 - 30%, whereas a shutter only creates a thermal buffer zone which prevents heat loss. The same is true for noise insulation, with the roller blind again “winning” in this category. According to system suppliers, noise reduction after the installation of roller blinds can reach up to 20 dB. This result cannot be reached by a roller blind [shutters], whose operation must be additionally silenced by means of rubber covers. In the case of large-sized glazing, it is worth considering the installation of XXL shutters. They can be made up to 4.5 metres wide and 5 metres high, without any joints. When choosing roller blinds, you must take into account that they need to be combined into sets, which does not always meet the aesthetic requirements of residents.

Technological innovations and development of the covers market make the assortment really wide. You can choose between external roller blinds (flush-mounted and top/front-mounted) or shutters (façade-mounted and top/front-mounted).

● FLUSH-MOUNTED ROLLER BLINDS

External roller blinds made of aluminium are now an integral part of architectural design and a decorative element of a façade. Most importantly, they genuinely increase the comfort of residents of single-family houses and flats - they control the lighting of the interior, ensure privacy and protection against excessive sun exposure.

Flush-mounted systems are by definition dedicated to new buildings, but can also be installed in existing buildings after making the necessary changes to the lintel.

It is important to plan this type of solution and the manner of its installation already at the stage of building design, which will allow for more effective use of its functional qualities. Flush-mounted roller blinds provide excellent thermal insulation, as they do not

interfere with the structure of the window, door or lintel. Thus, they do not affect the energy balance of the building. Moreover, these products blend in perfectly with the façade, forming an integral part of it.

At the same time, the front of the roller blinds box constitutes the base for any finishing material (e.g. plaster or clinker), thanks to which the box becomes an unnoticeable element of the building's façade.

The flush-mounted roller blinds are designed to provide protection against heat loss. The possibility to use an independently working mosquito net protecting against insects is an additional advantage. Similarly as in the case of top/front-mounted systems, the curtain of the flush-mounted roller blind can be foam-filled, plastic or extruded profiles (slats).



**FLUSH-MOUNTED ROLLER
BLIND WITH A MOSQUITO NET**



FLUSH-MOUNTED ROLLER BLIND

● TOP/FRONT-MOUNTED ROLLER BLINDS

Top/Front-mounted roller blinds are intended for already existing buildings.

As the name suggests, the advantage of these solutions is the lack of need to interfere with the current state of the house - their installation does not require special preparations and they are not integrated with the window; therefore, the decision to use them can be made at any time. Top-mounted roller blinds can be fitted to the window frames (in a recess) and front-mounted blinds can be fitted directly on the wall. Importantly, they are designed to provide protection against heat loss.

The curtain of a roller blind most often consists of profiles made of high-quality aluminium sheet, filled with polyurethane foam and coated with special two-layer PU/PA painting system. As a result, they are characterised by increased abrasion and weather resistance.

The offer also includes profiles made of extruded aluminium and plastic profiles, characterised by greater rigidity and stability. Front-mounted roller blind systems offer the possibility of integrating it with a mosquito net, which guarantees effective protection against insects in summer, at the same time protecting the interior against heat loss in winter.

What can smart roller blinds do?

Can roller blinds be SMART and adapt to the needs and rhythm of the residents? Today, yes! The most common operations of blinds involve opening them in the morning and lowering them in the evening. If the roller blind system is well programmed, you can save up to 10% on heating costs in winter. In summer - thanks to the solar sensor - the temperature in the house can be reduced by up to 9°C. The heat will not be so severe and the savings on air conditioning will increase.

A recommended solution is a presence simulation. An appropriately programmed clock opens and closes the covers as if the residents were present at home. This is a great convenience when going away on a business trip or staying on holiday. When you are away for a longer period of time, it is worth leaving the covers in different positions during the day - the completely repetitive sequences may suggest to a potential thief that it is an automated system that "guards" the house. The innovative character of the control system is also based on planning the presence simulation for every day of the week and every hour, also e.g. on a monthly basis.

“

Each roller blind/shutter system allows the option of manual, automatic or smart control.

“

Single-family house, Lubawa. 2021



Top/Front-mounted roller blind, Aluprof

Flush-mounted façade shutters, Single-family house



Flush-mounted façade shutters, Single-family house

● FLUSH-MOUNTED SHUTTERS

If the future residents dream of flush-mounted façade shutter, it is worth informing the architect about it at the stage of discussing the vision of the house. Covers of this type work best in new investments; while in existing buildings, they will require some intervention within the lintel. The advantage of flush-mounted shutters is the possibility to use any finishing material during plasterwork. This is due to the fact that curtain boxes are made of extruded aluminium and equipped with an innovative plaster supporting carrier.

● TOP/FRONT-MOUNTED SHUTTERS

As the name suggests, the covers can be installed in existing buildings, hence these solutions will be appreciated by those planning revitalisation of the building. There are two mounting options: in a window recess or on a façade and two guide options: cord and slat (with adjustable telescopic handles).



FLUSH-MOUNTED SHUTTERS



TOP/FRONT-MOUNTED SHUTTERS

ROLLER BLINDS, SHUTTERS, MOSQUITO NETS



● MOSQUITO NETS

Mosquito nets are nets installed in windows and doors. They are intended to protect the interior against insects, and at the same time not to darken the rooms or restrict the air-flow. Their lightness and “breathability” are appreciated by residents, especially on hot days. Open-work curtains will prove particularly useful in houses and flats located near forests and green areas, as well as in the close vicinity of water reservoirs.



Flyscreen:

frame structures filled with mesh used to protect rooms against insects, permanently fixed to windows, doors, shop windows, balconies, both sliding and swinging mosquito nets are available, a system intended for protection against insects, enabling ventilation of interiors in which it has been installed.



FLYSCREEN

Insect system:

pleated mosquito net system, protecting the room against insects,

it can be mounted both in window recesses and directly on the window frame; a very important option is the possibility to choose the direction of opening the mosquito net: sideways, centrally or sideways, which is enabled by a unique system of smooth sliding,

the certified pleated net used in the system is made of high-quality material resistant to rain, dust, UV radiation and wind,

a great advantage is the low-profile sill design of the mosquito net, especially useful for children, elderly or people in wheelchairs, for whom a high-profile sill may be an obstacle to free movement,

the sliding profile of the mosquito net is equipped with a handle for easy opening and magnets that hold the net in the closed position,

apart from the standard net in grey or black, customers can also order a coloured net (single colour or melange), a metallised net (reflecting sunlight) and an antiallergic one,

the mosquito net does not need to be removed for the winter period as all the materials are resistant to weather conditions,

the system is perfect for large-sized windows and doors (especially balcony and terrace doors).



● ENCLOSURES OF TERRACES

Terrace you do not want to leave .. is a roofed terrace.

A terrace enclosure significantly improves the functionality of this chill-out zone and considerably increases the usable space of the house. Taking a rest and enjoying the view of the garden will be possible during both hot and rainy days. What is important, the latest roofing systems create full harmony with the terrace, façade and the shape of the building.

Terrasendach is an example of a terrace enclosure: a roofing system without thermal insulation, adapted to be filled with multi-chamber polycarbonate, as well as single glass and single-chamber glass,

available system options:

- eaves with load-bearing rafter from outside,
- hip roof with different types of load-bearing rafters, fixed from the outside
- pitched roof with external rafter,
- roof with valley gutters and external rafter,

characteristics:

- span between two rafters up to 600 cm,
- depth of the load-bearing rafter up to 600 cm*, *taking into account 10mm VSG and 80cm span between rafters, 85kg/m² snow load, L/200 deflection factor
- load-bearing structure with various gutter solutions,
- possibility to mount sunshades to side beams of the structure,
- large selection of gutter solutions,
- roof angle between 5° and 25°,
- possibility to assembly lighting through a terminal strip,
- quick prefabrication,
- wide selection of colours - RAL palette, structural colours, wood imitation colours, anode, bi-colour.



Pergola NUUN Aliplast

Closer to nature all year round? Naturally!

The NUUN pergola is a bioclimatic structure. It guarantees full protection and control against sun, rain or wind, while remaining in visual harmony with the building. The innovative roof structure is made of movable aluminium slats (moved by a built-in electric drive).

The aluminium pergola provides:

- increased resistance to various types of deformation - it is resistant to changing weather conditions, humidity and even mechanical damage; its properties remain stable even after many years,
- durable and light-weight structure,
- modular structure - allows the structure to fit into any shape of the building and provides the desired size of the roofing; this solution will perfectly fit into the style of both modern and traditional buildings,
- privacy and protection from autumn wind,

guaranteed by the installation of side screens: these can be systems of all-glass sliding doors or zip screens; insects are prevented by mosquito nets which can be installed at your own discretion.

- additional equipment allows the season for outdoor lounging under the pergola to last almost all year round. NUUN can be equipped with integrated LED lighting, sound system and heating. A heater is an elegant and economical heat source that is perfect for early spring, late autumn, as well as colder summer days and evenings. The option of smart control using remote control or phone increases the comfort of use.

FRONT PANEL DOOR



● FRONT PANEL DOOR

The door is a visual representation of the house and an important decorative element of the façade, emphasising the design of the entire building. Technological innovations used in joinery enable doors to become a true work of applied art. Designers use different inspirations to create unique compositions from various shapes of glazing, types of handles, fittings or colours.

Overlay panel or cartridge panel?

Among the mentioned fittings, handles, frames and other structural elements, the key element is the so-called filling (door leaf), which is commonly referred to as “door” and in construction nomenclature as door panel. The door panel is available in insert and overlay versions.



Insert door panel

The frames of the insert panel installed inside the leaf are visible from both the external and internal sides. The insert panel has one key feature - if the surface is damaged or the interior design changes, it can be replaced with a new one, without buying the whole door. Insert panels are therefore a practical and economical solution, particularly popular in revitalised buildings.



Overlay door panel

The overlay door panel - mounted “on” the leaf on both sides - is characterised by very good thermal insulation parameters, so important in energy-efficient and passive buildings. Design minimalism is another feature of the overlay panel. It is cleverly concealed, therefore suitable for minimalist designs where there is a ‘fashion for the invisible’. Overlay panels are particularly recommended for new buildings.

Opening to design

An energising orange door with integrated glass panes - or a solid door with a rough concrete texture that almost blends in with the façade? Modern technology enables almost unlimited colour and texture combinations on the door panel face. RAL colours, anthracite, steel, concrete, stone and wooden textures are available. A well-chosen door can perfectly balance the design - be a distinctive accent and at the same time balance the minimalism of a building or, on the contrary, calm down a rich form of a building.

Customised in every detail

Door fittings and accessories are fully customisable. Designing your own door is possible down to the last detail, for example due to handles and grips in a variety of colours, shapes and sizes. This means that doors can have sophisticated design using fittings and glazing, or their elements can be reduced to the bare essentials - for example, visually minimalistic handles.



www.budmar-aluminium.pl
biuro@budmar-aluminium.pl
tel. +48 603 170 799

